



ROWVILLE
SECONDARY COLLEGE

Nurturing strengths to grow curious and powerful learners

Welcome New Students

rowvillesc.vic.edu.au

WELCOME TO ROWILLE SECONDARY COLLEGE

We are very excited to have you at our school. This is your comprehensive 'Welcome Pack' to give you and your family all the information you need to start successfully at our ***One great school.***

In this pack you will find:

- Key student information
- Key dates
- School values & House system
- School maps
- Uniform requirements
- Communication channels
- Key staff list
- Student Leadership
- Canteen list & opening hours
- Library information
- Compass Guide for Parents

KEY DATES

2024

TERM 1

Wednesday 7 February at 5.30pm: East Family Picnic
Thursday 8 February at 5.30pm: West Family Picnic
Tuesday 13 February: House Sports Swimming Carnival
Monday 19 Feb – Wednesday 21 Feb: East Year 7 Camp
Wednesday 21 Feb – Friday 23 Feb: West Year 7 Camp
Monday 26 February: Student Data BPA Dashboard (Online meeting)
Monday 11 March: Labour Day Public Holiday
Tuesday 12 March: School Photo Day
Wed 13 March – Mon 25 March: NAPLAN online
Monday 25 March: East School Open Night
Wednesday 27 March: West School Open Night
Thursday 28 March: School Photo Catch-up Day & Last Day of Term 1
Friday 29 March: Good Friday & School Holidays start

2024

TERM 2

Monday 15 April
Tuesday 16 April
Tuesday 22 April
Tuesday 23 April
Thursday 25 April
Monday 29 April
Thursday 2 May
Tuesday 14 May
Wednesday 15 May
Monday 10 June
Tuesday 11 June
Tuesday 18 June
Tuesday 25 June
Friday 28 June

First Day of Term 2
MSA Program Information Night
RIA Program Information Night
House Athletics Day
ANZAC Day Public Holiday
RSA Program Information Night
Parent Teacher Interviews
Courage to Care Year 8 West
Courage to Care Year 8 East
Kings Birthday Public Holiday
Student Free Day – Assess & Report Writing
GAT – Units 3 & 4 Eastern Campus
Whole School Assembly East
Whole School Assembly West
Last day of Term 2



SCHOOL VALUES & VISION

One great school

RSC VALUES

- Respect: Act as you would like to be treated
- Responsibility: Brave enough to play your part
- Excellence: Nothing but your best
- Community: We're all in this together

RSC MISSION STATEMENT

Nurturing strengths to grow curious and powerful learners.



KEY TEACHING STAFF – PRINCIPAL TEAM



Julie Kennedy
College Principal



Alex Von Scheven
Assistant Principal
Director of RSA



Heloise Martin
Assistant Principal
Director of MSA



Robyn Geake
Assistant Principal
Director of RIA



Kate Phillips
Assistant Principal
Director of GE



Sarah Spence
Assistant Principal
Director of
Inclusion and
SWPBS

KEY TEACHING STAFF – HEAD OF HOUSE

House Leaders **Aston**



Craig McGeehan
East



Dan Barton
East



Gary Gilbert
West



Gillian Neumann
West



ASTON



MABO

House Leaders **Mabo**



Jay Hoeft
East



Peter Iannazzo
East



JP Kruger
West



Aaron Marshall
West

House Leaders **Walton**



Jade Williams
East



Felissa Tsolakis
East



Mel Evans
West



Shane Pilkington
West



WALTON

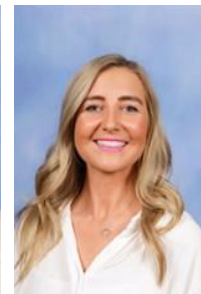


STYNES

House Leaders **Stynes**



Kate Varnam
East



Claire Folie
East



Chris Gurr
West



Suzi Visser
West

2024 SCHOOL CAPTAINS



West Campus

Rhylee Zoudlik, Hunter Laub, Hayley Alipan,
Natalie Ly,

East Campus

Heidi Spratt, Gemma Brown, Blake Dance,
Jackson Honey



SCHOOL UNIFORM



[Visit our website for Uniform Requirements](#)



HOW TO STAY IN THE LOOP AT RSC

Communication Channels @ RSC

There are lots of ways to stay up-to-date at the college. Find out about important dates, upcoming events and the latest school news.

- Like & Follow us on [Facebook](#)
- Follow us on [Twitter](#)
- Follow us on [Instagram](#)
- Five Exciting Things fortnightly email [sign up here](#)
- [Compass](#) for your child's learning progress, school news and events, excursions and year level specific requirements
- Visit our website rowvillesc.vic.edu.au



rowvillesc.vic.edu.au



ROWVILLE
SECONDARY COLLEGE

HOW TO USE COMPASS

- Compass is our main portal for communication between students, teachers, parents and official school news updates.
- Click here to read for our [Compass Guide for Parents](#).
- You can access Compass from our website home page.



SCHOOL CAFÉ

The canteen is open everyday

Eastern Campus 8.00am – 4.00pm

Western Campus 8.30am – 2.05pm

- Morning Recess: 10.35am–10.55am
- Lunch: 12.05pm–12.35pm
- Afternoon Recess: 1.45pm–2.05pm

Order your Lunch – Qkr! App

You can order and pay for your school lunch prior to 9.00am on the day without bringing cash to school.

[Click here](#) for instructions on how to download and use Qkr!

ROWVILLE *Café*

Gluten Free and Vegetarian available on request...Must be Pre ordered at the cafe by 10am

See our Specials Board for weekly specials

Take the stress out of school lunches. order and pay on-line with our QKR App

Orders need to be in by 9am



Please [CLICK HERE](#) to go to the School website for the current Menu.

INSTRUMENTAL MUSIC PROGRAM

The instrumental music program at Rowville Secondary College strives to deliver a quality music education to all students.

We cater for a vast range of instruments and voice, and encourage, motivate, inspire and guide our students to achieve their best through individual and ensemble-based learning.

Our team of professional musicians and teachers provide a wide range of experiences to launch students into further musical study, and on to professional and rewarding careers in the music industry. At the same time, all students involved in the program benefit from the social aspects of our extra-curricular program and enhance their academic achievements.

Visit our website to [download an enrolment form](#).





LIBRARY

Rowville Secondary College prides itself on offering excellent resources in both print and digital to facilitate teaching and learning. There is a library at each campus serving the needs of students and teachers, and library staff are there to assist by providing information and resources.

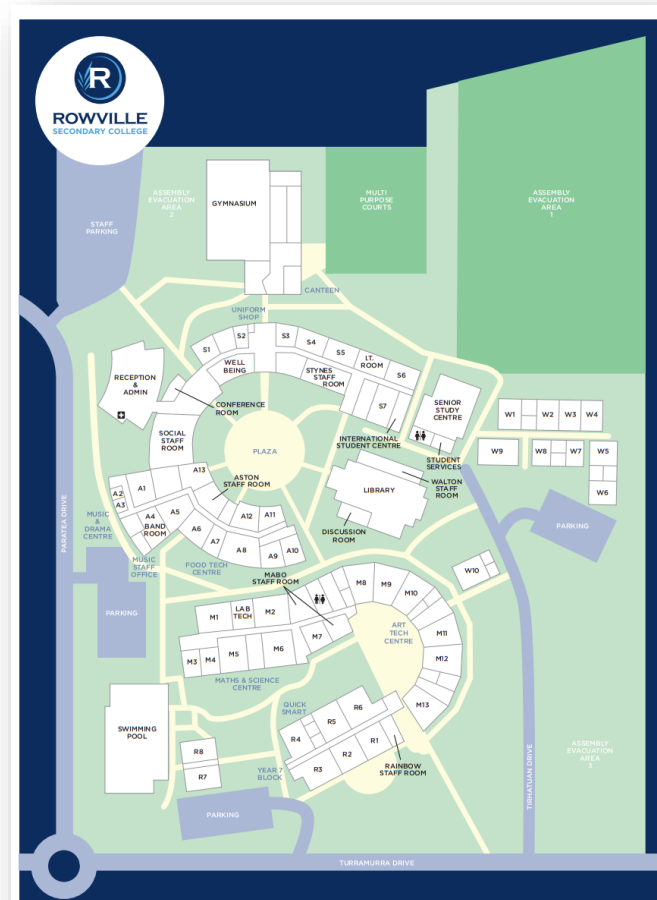
The library is open from 8.00am to 4.00pm and students are encouraged to visit before and after school, and during recess and lunch.

The libraries are a welcoming space for independent and group study, research, and quiet reading. They also provide an opportunity for socialising with friends, group discussions, and playing games. During class time, teachers can send a small group of students to work in the library.

SCHOOL MAPS



ROWVILLE SECONDARY COLLEGE - EASTERN CAMPUS



ROWVILLE SECONDARY COLLEGE - WESTERN CAMPUS

[Download school maps](#)

rowvillesc.vic.edu.au



ROWVILLE
SECONDARY COLLEGE



ROWVILLE
SECONDARY COLLEGE

GENERAL EXCELLENCE | INSTITUTE OF THE ARTS | MATHS & SCIENCE ACADEMY | SPORTS ACADEMY

rowvillesc.vic.edu.au