



**ROWVILLE**  
**SECONDARY COLLEGE**

Welcome New Students

[rowvillesc.vic.edu.au](http://rowvillesc.vic.edu.au)

# WELCOME TO ROWILLE SECONDARY COLLEGE

We're very excited to have you at our **one great school** school. This is a comprehensive 'Welcome Pack' to give you and your family all the information you need to start successfully at Rowville Secondary College. In this pack you will find:

- School Values & Vision
- Key Teaching Staff
- Key Dates: refer to our [website](#)
- School House System
- Uniform Requirements
- Communication Channels
- Student Leadership
- Café & Library Information
- Compass Guide for Parents
- School Maps

# SCHOOL VALUES & VISION

**One great school**

## RSC VALUES

**Respect:** Act as you would like to be treated

**Responsibility:** Brave enough to play your part

**Excellence:** Nothing but your best

**Community:** We're all in this together

## RSC MISSION STATEMENT

*Nurturing strengths to grow curious and powerful learners.*



# BPA

## THE BEHAVIOUR POINT AVERAGE (BPA)

At Rowville Secondary College, we believe in the power of teaching and nurturing explicit learning behaviours in our students, to help them become powerful learners. By setting high expectations and emphasising certain behaviours, we create a supportive atmosphere that helps students to thrive.

In 2024, we launched an individual dashboard for each student that gives them high quality feedback on 6 learning behaviours that we believe are critical for their success – this is called the Behaviour Point Average (BPA).

Visit our website for more information on the [BPA](#).

## LEARNING BEHAVIOURS

1. Attendance
2. Being on time to each class
3. Submitting Learning Tasks
4. Being 'Ready to Learn'
5. Being 'Focused on Learning'
6. Being a 'Respectful Community Member'



# CLASS TIMES

## Class Times

### Monday to Thursday

**Learning Mentor:** 9:00am – 9:20am

**Change-over** 9:20am – 9:25am

**Period 1:** 9:25am – 10:35am

**Morning Recess:** 10.35am – 10.55am

**Period 2:** 10:55am – 12:05pm

**Lunch:** 12.05pm – 12:35pm

**Period 3:** 12:35pm – 1:45pm

**Afternoon Recess:** 1.45pm – 2:05pm

**Period 4:** 2:05pm – 3.15pm

**School dismissed:** 3.15pm

## Class Times

### Fridays Only

**Period 1:** 9:00am – 10:10am

**Morning Recess:** 10:10am – 10:40am

**Period 2:** 10:40am – 11:50am

**Lunch:** 11:50am – 12.20pm

**Period 3:** 12:20pm – 1:30pm

**Afternoon Break:** 1.30pm – 1:50pm

**Period 4:** 1:50pm – 3:00pm

**School dismissed:** 3.00pm



**ROWVILLE**  
SECONDARY COLLEGE

# MEET OUR PRINCIPAL TEAM



**Nicole Pryor**  
College Principal



**Alex Von Scheven**  
Assistant Principal  
Director of RSA



**Heloise Martin**  
Assistant Principal  
Director of MSA



**Kate Phillips**  
Assistant Principal  
Director of GE



**Kim McMahon**  
Assistant Principal  
Director of RIA

# MEET OUR HOUSE LEADERS



## Aston House Leader



Craig McGeehan  
East



Deanna Lo Bianco  
East



JP Kruger  
West



Gillian Neumann  
West



## Mabo House Leaders



Kate Varnam  
East



Peter Iannazzo  
East



Chris Gurr  
West



Ada Leung  
West



## Walton House Leaders



Jade Williams  
East



Felissa Tsolakis  
East



Mel Evans  
West



Shane Pilkington  
West



## Stynes House Leaders



Gary Gilbert  
East



Dan Barton  
East



Jessica Neely  
West



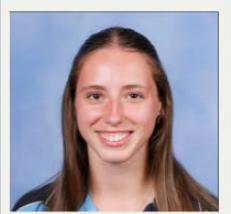
Rowan McDowell  
West



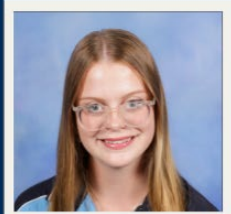
# 2026 SCHOOL CAPTAINS



Angelina Malic



Monique Kindler



Bethany Stevenson



Jade Faichney



Summer Bush



Hudson Kilby



Tom Brusco



Christina Bretel

## West Campus

Angelina Malic, Monique Kindler, Bethany Stevenson & Jade Faichney.

## East Campus

Summer Bush, Hudson Kilby, Tom Brusco & Christina Bretel.



# RSC NEW STUDENT WEBSITE PAGE

New student information relating to the resources you need to purchase, including **booklists, uniforms and laptops** for your commencement can be found on our New Students Website page as linked below:

- [Year 7 Transition Hub](#)
- [Year 8-12 New students](#)



# Photographing: filming-recording students

## Consent form to be completed

For RSC to publish photographic, video, audio, and any other form of electronic recording of your child for school and media-related purposes we seek your permission to do so. These might include using photographs on our school intranet/ultranet, School Yearbook, in the local media and in our school newsletters or for school publications that will be distributed to prospective students and their parents.

Please read the [Photographing, Filming & Recording Students Policy](#)

**Please print and complete** the [consent form](#) and return to the front office at your child's campus or email: [administration@rowvillesc.vic.edu.au](mailto:administration@rowvillesc.vic.edu.au)



If you are unable to print, please call the school to assist:

- East Campus- RSA/RIA: Tracy Bertacchini 9755 4515
- West Campus- MSA/GE: Natalie Vance 9755 4525

[rowvillesc.vic.edu.au](http://rowvillesc.vic.edu.au)



# Education Perfect

## Years 7-10 or Years 11-12 Foundation Maths / Numeracy

Education Perfect is an **online subscription** that is required for students in Years 7-10 and Years 11-12 Foundation Maths / Numeracy.

If enrolling **after** 28 January 2026:

- Please make the payment through the [EP payment portal](#).
- Click on “Login with your school account”

Login using your School Compass username & Password - [XXXXXXXX@rowvillesc.vic.edu.au](mailto:XXXXXXXX@rowvillesc.vic.edu.au)  
(this will be provided on your first day at school)



[rowvillesc.vic.edu.au](http://rowvillesc.vic.edu.au)



# EDROLO

Years 11-12 Physical Education only



**If you are enrolled into VCE Physical Education Units 1-4, you are required to purchase the EDROLO online subscription**

EDROLO PE Units 1&2 (or 3&4) Daily - \$35 (incl. GST) - compulsory resource

If enrolling **before** 17 March 2026:

- Payment must be made online via your EDROLO account.
- To activate your account and make payment, please go to [www.edrolo.com.au/activate/wqn-xpa](http://www.edrolo.com.au/activate/wqn-xpa)

If enrolling **after** 17 March 2026:

- Please ask your parent / guardian to contact the school at 9755 4555, or email Monique Addison [Monique.Addison@education.vic.gov.au](mailto:Monique.Addison@education.vic.gov.au) to arrange for payment.
- Once your account has been setup, Edrolo will send a confirmation email to your school email address [XXXXXXXX@rowvillesc.vic.edu.au](mailto:XXXXXXXX@rowvillesc.vic.edu.au) – head to this email and click the activation link. If you don't receive the email, please check your spam or junk folder.



# SCHOOL UNIFORM

[Visit our Uniform website page](#)

[OnTrack Sportswear](#) is our uniform supplier.

Here is the [Uniform Price List](#).

Address: 22 Kingsley Cl, Rowville VIC 3178

Phone: 03 9765 5823 (phone monitored during shop hours only)



# HOW TO USE COMPASS

Compass is our main portal for communication between students, teachers, parents and official school news updates.

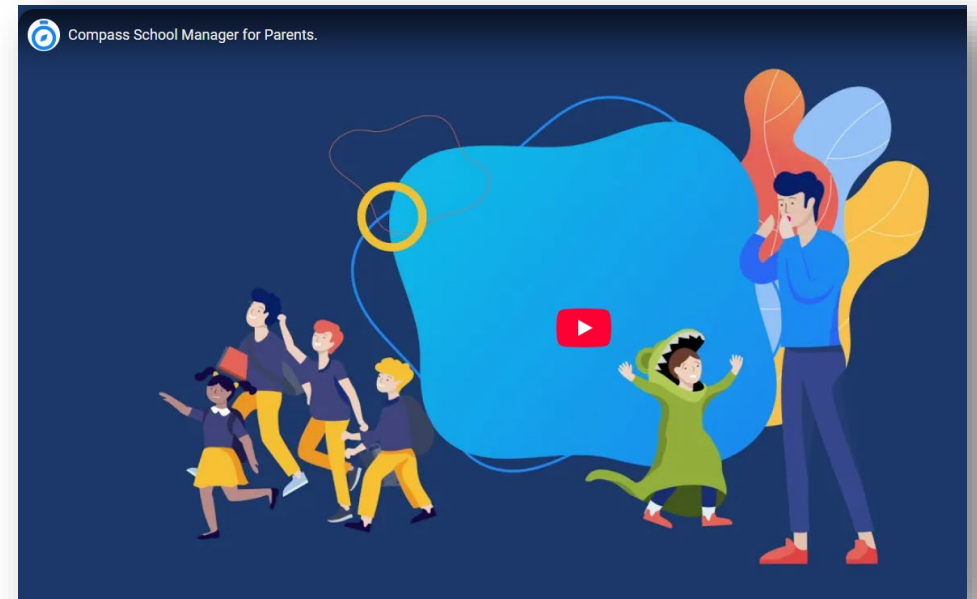
[Compass Information Parent Compass Guide](#)

[Watch Video](#)

[Compass FAQ Guide.](#)

[Rowville Secondary College: login to compass](#)

Parent Compass Logins are emailed to you from our Student Administrators, please contact the school if you have not received your own parent logins.



[rowvillesc.vic.edu.au](http://rowvillesc.vic.edu.au)



# HOW TO STAY IN THE LOOP AT RSC

## Communication Channels @ RSC

There are lots of ways to stay up-to-date at the college. Find out about important dates, upcoming events and the latest school news.

- Like & Follow us on [Facebook](#)
- Follow us on [X](#)
- Follow us on [Instagram](#)
- Five Exciting Things fortnightly email [sign up here](#)
- [Compass](#) for your child's learning progress, school news and events, excursions and year level specific requirements
- Visit our website [rowvillesc.vic.edu.au](http://rowvillesc.vic.edu.au)



[rowvillesc.vic.edu.au](http://rowvillesc.vic.edu.au)



**ROWVILLE**  
SECONDARY COLLEGE

# SCHOOL CAFÉ



**ROWVILLE**  
SECONDARY COLLEGE

## Cafe Menu

### Hot Food

Chicken Burgers \$6.50  
 Beef Burger \$7.00  
 Chicken Cheese & Bacon Burger \$7.00  
 Beef/Chicken Noodles \$4.50  
 Fried Dim Sims \$1.80  
 Potato Cake \$1.80 (WED ONLY)  
 Hot Chips \$5.50 (WED ONLY)  
 Hot Dog \$4.50  
 Pie \$5.50  
 Sausage Roll \$4.50  
 Spinach & Cream Cheese Roll \$5.00  
 Bolognaise Pasta \$7.00  
 Veggie Pasta \$5.50  
 Butter Chicken \$7.00

### Cold Food

(All salads rolls And wraps made fresh on site)

Chicken Schnitzel and mixed lettuce roll with Peri Peri Sauce or Garlic Aioli \$7.00  
 Fresh Chicken and salad Rolls \$7.00  
 Ham and Salad Rolls \$7.00  
 Chicken and Salad Bowl \$7.50  
 Ham and Salad Bowl \$7.50  
 Chicken schnitzel Caesar Salad \$9.00  
 Small Wrap with Chicken Schnitzel, mixed lettuce with Peri Peri Sauce, Garlic Aioli or Sweet Chilli Sauce \$5.00  
 Large Wrap with choice of fillings \$9.00  
 Fresh Fruit Salad \$6.00

### Snacks

Homemade Muffins \$3.50  
 Hot Jam Donuts \$2.20  
 Potato Chips \$3.20  
 Cookies \$3.50  
 Homemade Slices \$4.50

### Drinks

375ml Cans \$3.50  
 600ml Bottles \$4.50  
 Gatorade \$5.50  
 Milk Drinks \$5.00  
 Iced Tea \$5.00  
 600ml Water \$3.50  
 750ml Water \$4.50  
 1000ml Water \$5.50  
 Spring Valley Juice \$4.50  
 Juice Boxes \$3.00  
 Up & Go \$3.00

### Hot Drinks

Regular \$6.00  
 Large \$7.00  
 • Cappuccino  
 • Latte  
 • Hot Chocolate  
 • Spice Chai  
 • Vanilla Chai  
 • Variety of Teas

Gluten Free and Vegetarian available on request. Must be pre ordered at the Café by 10am

See our Specials Board for weekly specials

Take the stress out of school lunches. Order and pay online with our QKR App. Orders need to be in by 9am.



[rowvillesc.vic.edu.au](http://rowvillesc.vic.edu.au)



**ROWVILLE**  
SECONDARY COLLEGE

# INSTRUMENTAL MUSIC PROGRAM

The instrumental music program at Rowville Secondary College strives to deliver a quality music education to all students.

We cater for a vast range of instruments and voice, and encourage, motivate, inspire and guide our students to achieve their best through individual and ensemble-based learning.

Our team of professional musicians and teachers provide a wide range of experiences to launch students into further musical study, and on to professional and rewarding careers in the music industry. At the same time, all students involved in the program benefit from the social aspects of our extra-curricular program and enhance their academic achievements.

Visit our website to [download an enrolment form.](#)





## LIBRARY

Rowville Secondary College prides itself on offering excellent resources in both print and digital to facilitate teaching and learning. There is a library at each campus serving the needs of students and teachers, and library staff are there to assist by providing information and resources.

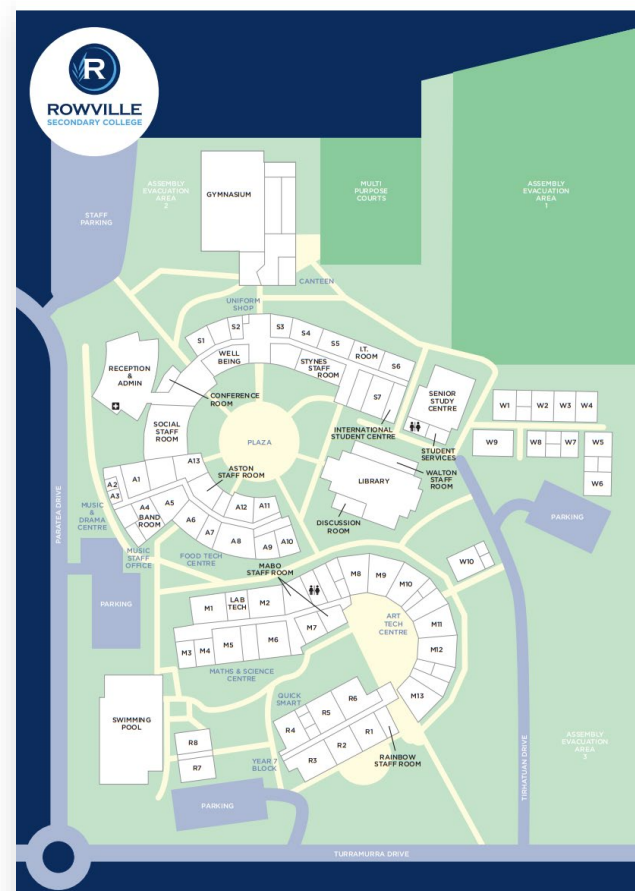
The library is open from 8.00am to 4.00pm and students are encouraged to visit before and after school, and during recess and lunch.

The libraries are a welcoming space for independent and group study, research, and quiet reading. They also provide an opportunity for socialising with friends, group discussions, and playing games. During class time, teachers can send a small group of students to work in the library.

# SCHOOL MAPS



ROWVILLE SECONDARY COLLEGE - EASTERN CAMPUS



ROWVILLE SECONDARY COLLEGE - WESTERN CAMPUS

[Download maps](#)

[rowvillesc.vic.edu.au](http://rowvillesc.vic.edu.au)



**ROWVILLE**  
SECONDARY COLLEGE



**ROWVILLE**  
**SECONDARY COLLEGE**

GENERAL EXCELLENCE | INSTITUTE OF THE ARTS | MATHS & SCIENCE ACADEMY | SPORTS ACADEMY

[rowvillesc.vic.edu.au](http://rowvillesc.vic.edu.au)